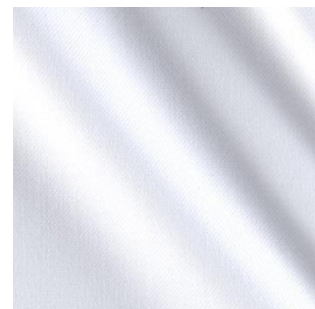


Comment fabriquer votre poupée

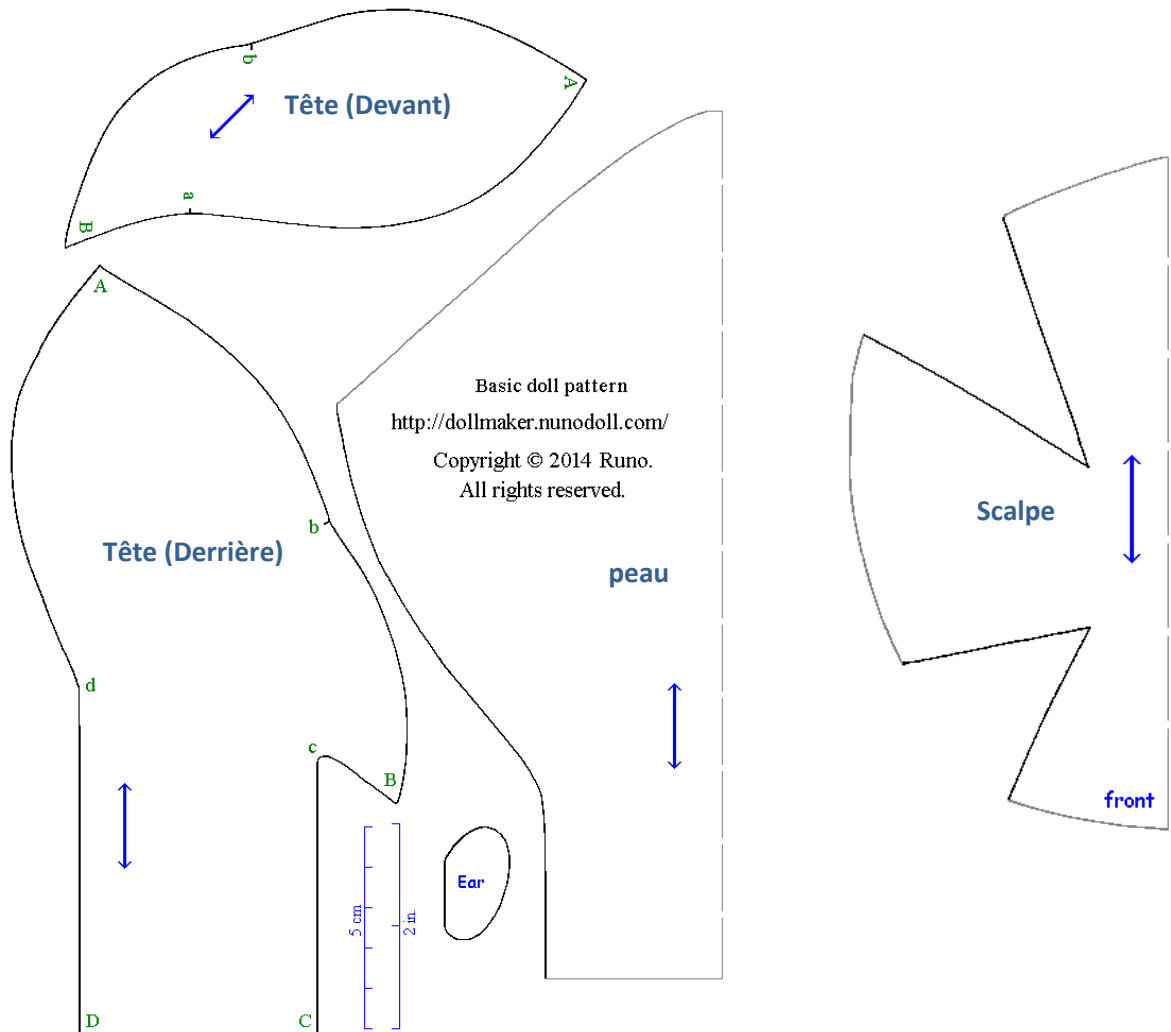
Matériels:

- Coton blanc pour remplir la poupée
- Tissu extensible pour la peau
- Tampon de coton, ou carton pour le nez.
- Baguettes chinois en bambou pour le cou et le dos.
- Fibre de polyester
- Balles de coton (comme dans une couette)
- Bobine de laine ou faux pélage
- La colle et du coton



Motifs:

La tête / le scalpe



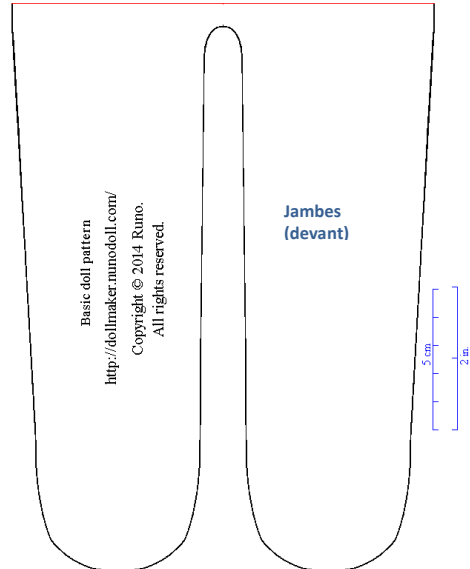
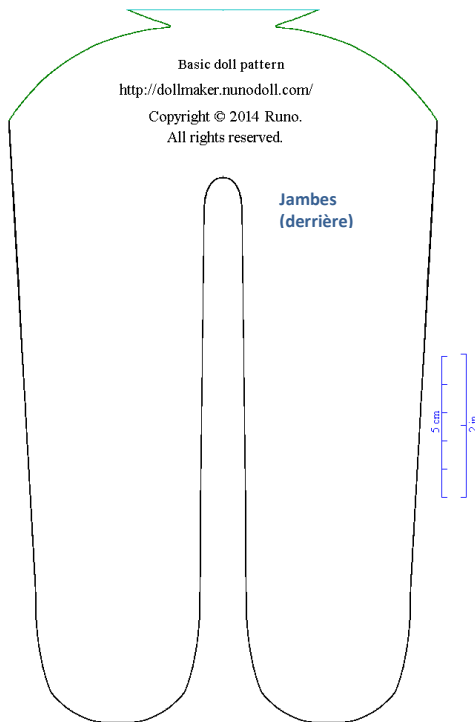
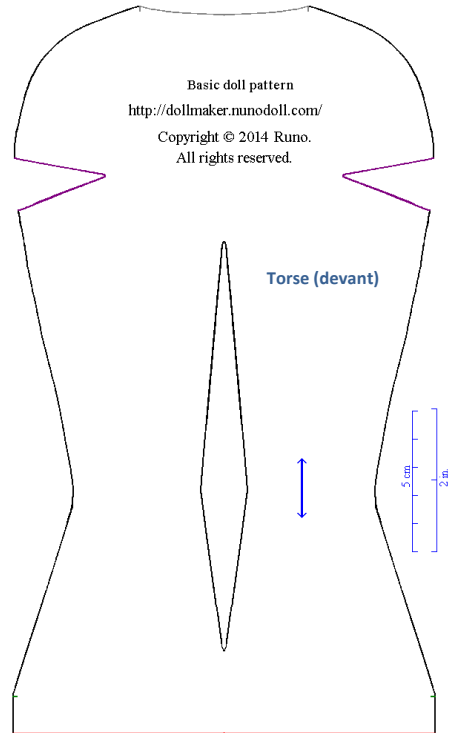
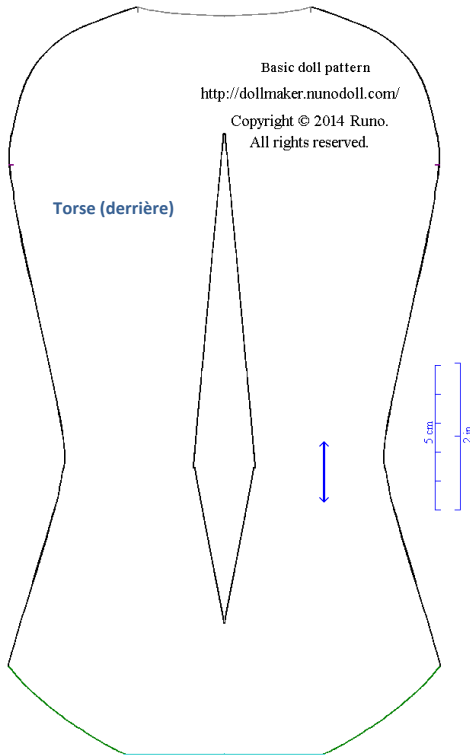
<http://dollmaker.nunodoll.com/girl/head.html>

Visage



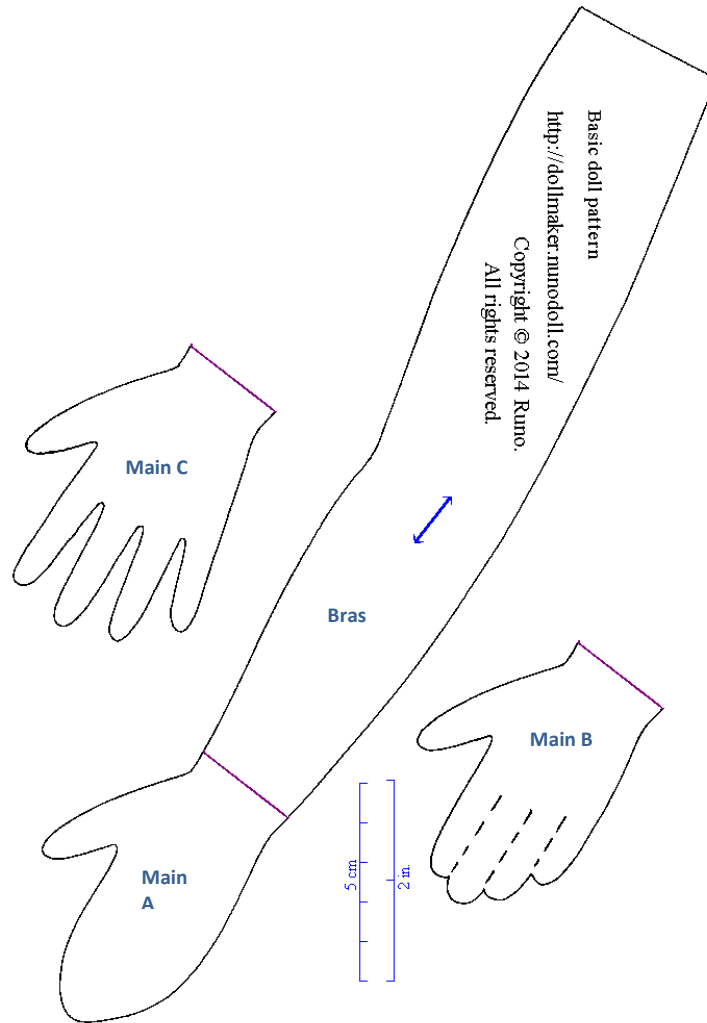
<http://dollmaker.nunodoll.com/girl/face.html>

Le torse et les cuisses (devant / derrière)



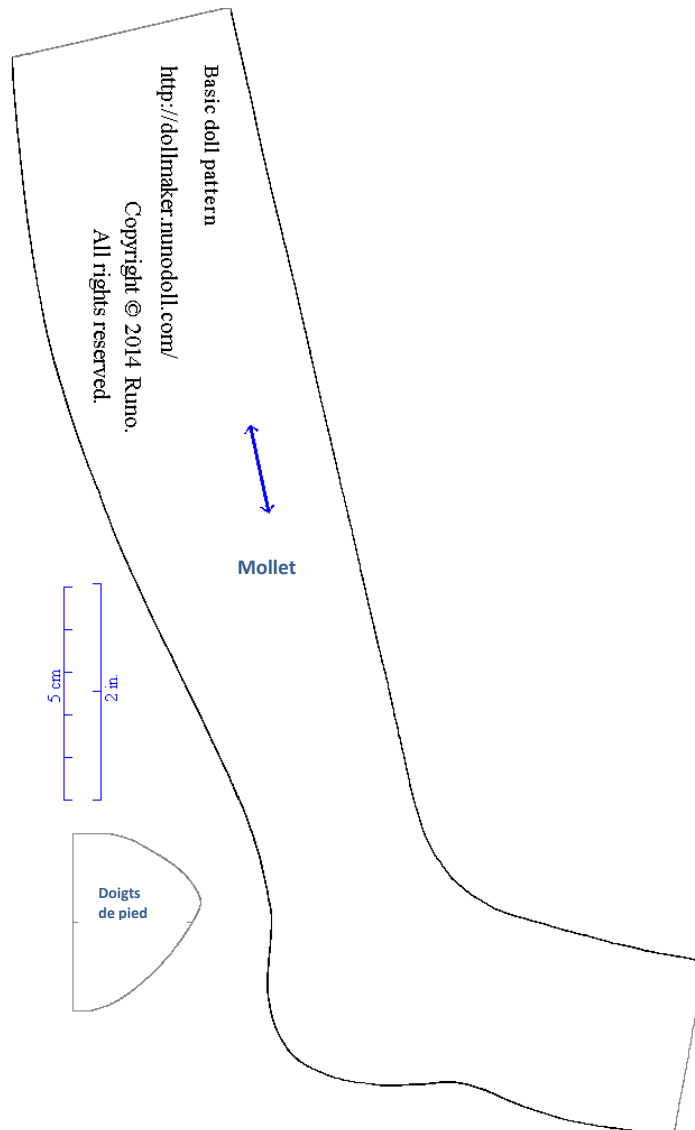
<http://dollmaker.nunodoll.com/girl/body.html>

Les mains et les bras (choix de motifs)



<http://dollmaker.nunodoll.com/girl/arms.html>

Les mollets et les pieds



<http://dollmaker.nunodoll.com/girl/legs.html>

Fabrication et mise ensemble des différentes parties



<http://dollmaker.nunodoll.com/girl/together.html>